

## Huddle Tile

製品型	Carpet Tile	
コレクション	Teamwork	
スタイルナンバー	5T498	
建設	マルチレベルパターンループ	
ファイバ	Ecosolution Q100™ Nylon	
染色法	100% 原液着色	
一次バックキング	合成	
二次バックキング	Ecworx®タイル	
保護治療	SSP@shaw 土壌保護保証	
	u.s.	metric
商品のサイズ	9 in x 36 in	23 cm x 91 cm
ボックスあたりの面積	45 ft <sup>2</sup>	4.18 m <sup>2</sup>
ボックスあたりの個数	20 pcs	
ゲージ	1/12 in	47.2 per 10 cm
ステッチ	10.0 per in	39.0 per 10 cm
平均密度	6113 oz/yd <sup>3</sup>	0.226 g/cm <sup>3</sup>
キロテックス		11.16
総厚	0.240 in	6.1 mm
房状の重量	18 oz/yd <sup>2</sup>	610.3 g/m <sup>2</sup>



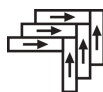
## 推奨インストール方法



Ashlar



Brick



Herringbone



Monolithic



Stagger

## データ + テスト

放射パネル (astm E648)

Class I

Nbs煙

Less Than 450

静電気の傾向

Less Than 3.5 kv

Cri Green Label Plus (glp)

GLP9968

錠剤テスト

Pass\*

Adaコンプライアンス

&gt;0.6、ADA 歩行面およびアクセス可能ルート用推奨静摩擦係数の基準に合致\*\*\*

Test Reports may be included or listed by the manufacturing/inventory style number as opposed to the noted selling style number.

## 保証

生涯商用限定保証

コーディネート商品

Carpet Tile: **Collaboration Tile, Kickoff Tile, Follow-Up Tile**

属性+認定

Certifications Below Apply Exclusively To The Carpet Tile Rug Itself And Not The Lokworx Tabs Adhesive

Health & Wellbeing

Material Ingredient Transparency

Cradle to Cradle Certified® | Silver Level (Version 4.0)  
Health Product Declaration (HPD) | 1,000 ppm 開示  
Living Building Challenge (LBC) | レッドリスト記載化学物質無配合  
Declare | LBC 準拠  
NSF 140 | ゴールド  
CRI Green Label Plus (GLP) | GLP9968

Indoor Air Quality

Climate Impact

Environmental Product Declaration (EPD)

ISO 14044、ISO 14025 および EN15804 に基づく 第三者認証取得

Embodied Carbon (Cradle to Gate)

4.61 kg CO<sub>2</sub>/m<sup>2</sup>

Life-Cycle Carbon Emissions

Carbon Neutral

Total Recycled Content

59% (Pre-Consumer 59% | Post-Consumer 0%)

Product Packaging

100% リサイクル可能

Global Product Assessment

Singapore Green Label | 認証取得  
CE Marking (EN 14041) | 第三者認証取得  
Environmental Guarantee\* | Re[turn] Reclamation Program\* | Through  
Our Environmental Guarantee, Shaw Pledges to Transport And  
Recycle Any Ecoworx Carpet.  
Country of Origin\*\* | Imported

グリーンリード貢献クレジット

MRクレジット：製品の開示と最適化の構築  
環境製品宣言-オプション1：環境製品宣言（EPD）

3rd Party Certified in Accordance with ISO 14044, ISO 14025 & EN15804

MRクレジット：製品の開示と最適化の構築  
材料成分-オプション1：材料成分レポート

C2C Silver Level (Version 4.0) or HPD (Version 2.1)

MRクレジット：製品の開示と最適化の構築  
材料成分-オプション2：材料成分の最適化

C2C Silver Level (Version 4.0)

MR Credit: Building Product Disclosure and Optimization  
Sourcing of Raw Materials - Option 2: Leadership Extraction Practices

Environmental Guarantee: Re[turn] Reclamation Program\* | Through  
Our Environmental Guarantee, Shaw Pledges to Transport And  
Recycle Any Ecoworx Carpet.

EQクレジット：低排出材料  
オプション1：製品カテゴリの計算

Green Label Plus Certification: GLP9968

MR Credit: Interiors Life-Cycle Impact Reduction  
Option 3: Design for Flexibility

Ecoworx Tile with Lokdots Installation System

## Available Colorways

Impact 97100  
LRV 21.7Contribute 97500  
LRV 4Progress 97515  
LRV 18.5Influence 97535  
LRV 17.6

## 追加情報

\* To learn more about the recyclability of our products and our re[TURN], please visit [shawcontract.com/sustainability](https://shawcontract.com/sustainability).

\*\*Meets or exceeds all local and national regulations in country of manufacture.

\*\*\*This carpet is manufactured to be ADA compliant, but to be fully ADA compliant, the end-user must ensure the carpet is adhered to the floor and installed as outlined in the ADA standards.

[Installation Guidelines](#)

[Maintenance Guidelines](#)

Specifications are subject to nominal manufacturing variance. Material supply and/or manufacturing processes may necessitate changes without notice.

This product is an exclusive design and may not be duplicated in any manner. Use of this design in the creation of another product design is also strictly prohibited.

Visit [shawcontract.com/testing](https://shawcontract.com/testing) for more information.



**Declare.**



**PVC-Free**

Corporate Headquarters +1 800 257 7429 | +1 706 532 7984 | Atlanta +1 404 853 7429 | Bengaluru +91 80 6773 0202 | Beijing +86 10 6568 588 | Chicago +1 312 467 1331 | Dubai +971 4 584 6956 | Hong Kong +852 2623 0371 | Latin America (Miami) +1 305 827 5912 | London +44 207 961 4120 | Los Angeles +1 800 233 1614 | Melbourne +61 3 9939 8543 | Mexico City +55 5010 7600 | Mumbai +91 22 6284 5050 | Nantong +86 400 800 7429 | New York +1 212 953 7429 | Paris +33 (0) 1 81 22 44 39 | San Francisco +1 415 955 1920 | Santiago +562 2431 5000 x 550 | São Paulo +55 11 3071 1702 | Shanghai +86 21 3338 4000 | Singapore +65 6733 1811 | Sydney +1 800 556 302